

Woven Textures gift box

Nellie's Stampers April 2025 project instructions

The project:



Photo 1

Supplies:

- Early Espresso card for the box base = 4-5/8" x 6"
 - scored on the long side at 1-3/8", 2-3/4", 4-1/8" and 5-1/2"
 - scored on the short side at 1-3/8"
- Early Espresso card for the box lid = 2-15/16" x 2-15/16"
 - scored at 3/4" on all four sides
- WovenTextures DSP
 - Four pieces = 1-1/4" x 3-1/8"
 - One piece = 1-1/4" x 1-1/4"
 - Four pieces = 5/8" x 1-1/4"
- Basic Beige card to stamp and die cut the sentiment circle
- Basic Beige ribbon
- embellishments

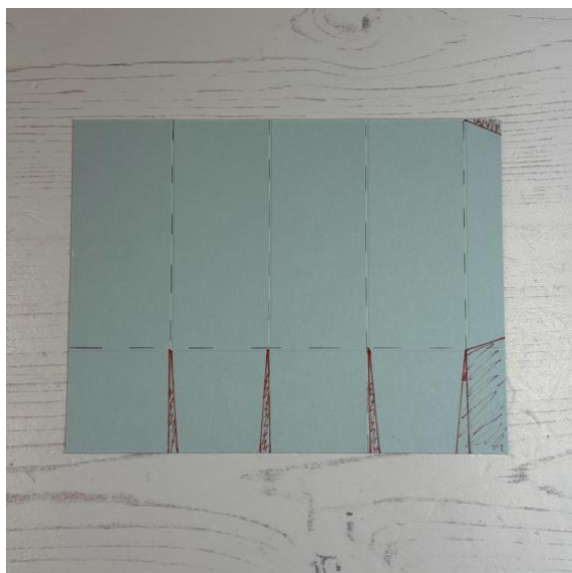


Photo 2

Make your gift box

- Fold and burnish the score lines on the box base and box lid - indicated as dashed lines on photos 2 & 4
- Cut the base of the box and the lid, using the red lines in photos 2 & 4 as a guide. These pieces should now look like photos 3 & 5
- Adhere the pieces of Woven Textures DSP to the sides of the box base. And to the top and sides of the lid.
- Stamp a sentiment on the Basic Beige card die cut
- Adhere ribbon to the back of your sentiment circle and add to the box with dimensionals
- Add some embellishments
- Pop in your gift and decide who to give it to!



Stamp With Nellie
Heather Forgan Independent Stampin' Up!® Demonstrator

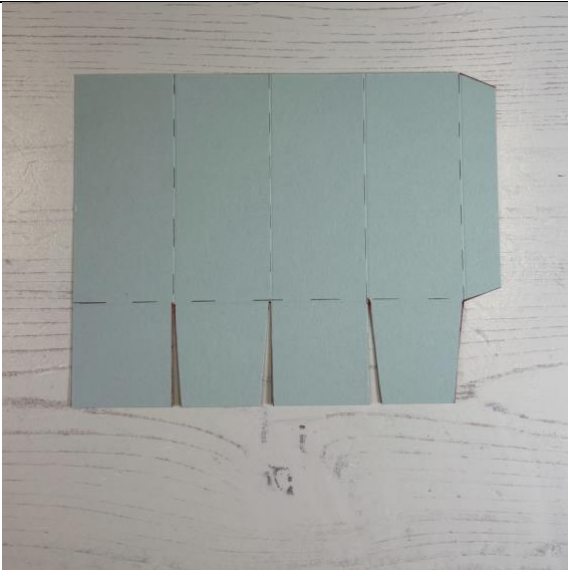


Photo 3

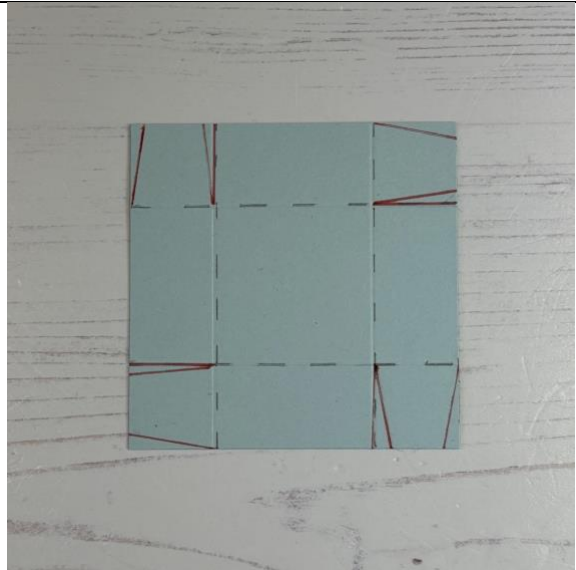


Photo 4

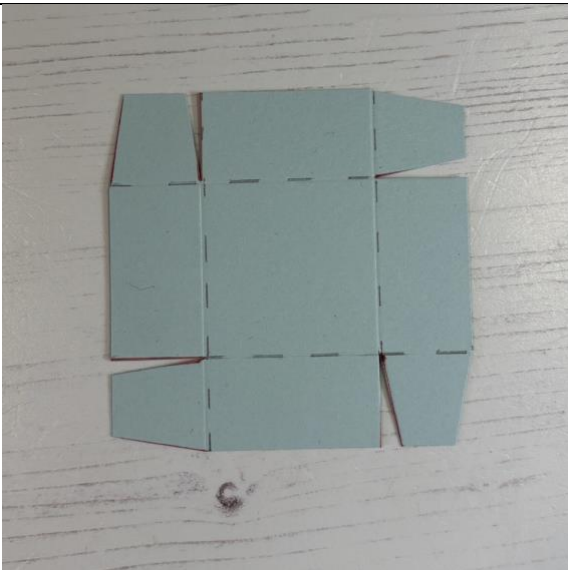


Photo 5



Photo 6