

Bloom Impressions tall milk carton box

February 2025 class instructions

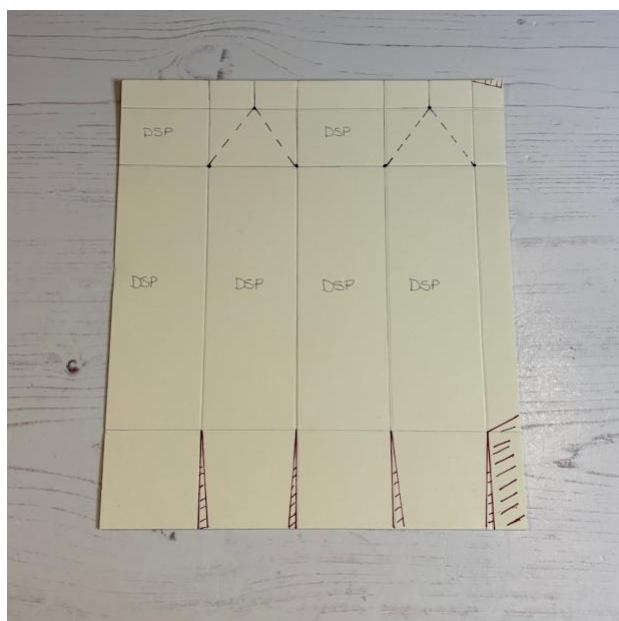
The project:



Supplies:

- coloured card measuring 7-1/2" x 6-1/2"
 - score on the short side at 1-1/2", 3", 4-1/2" and 6"
 - score on the long side at 1-1/2", 6" and 7"
 - score on the short side at 2-1/4" and 5-1/4" from the top to the first horizontal score line only
- 4 pieces of Bloom Impressions DSP that each measure 1-1/4" x 4-1/4"
- 2 pieces of Bloom Impressions DSP that each measure 1-1/4" x 3/4"
- scrap Basic White card for the sentiment and stamped & die cut flowers
- scrap green card for the die cut leaves
- embellishments
- a library clip

Cutting and scoring template...



Make your gift box

- Add in diagonal score lines with a ruler and bone folder as indicated by dashed lines on the template
- Cut the score lines at the bottom and right hand side panels, as shown in the template
- Fold and burnish your score lines on the card with a bone folder
- Add your Bloom Impressions DSP to each of the panels
- Glue the long side flap and adhere to the back of the first panel
- Fold and glue the bottom panels to form the base. I recommend folding the back panel forward, adhering the side panels then folding the front panel backwards and glue in place
- Insert your gift and then add your library clip
- Decorate the front with die cuts and a sentiment