

In Color Impossible Box

April 2024 in person & class in the mail instructions

The project:



Supplies:

- 2024-2026 In Color card measuring 6-1/2" x 6-1/4"
 - score the long side at 1-1/2", 3", 4-1/2" & 6"
 - score the short side at 1-1/2", 4", 4-3/4" & 5-1/2"
- In Color DSP measuring
 - 1-1/4" x 2-1/4" (four pieces)
 - 1-1/4" x 5/8" (four pieces)
- Basic White card for the sentiment tag, frame and leaf
- In Color ribbon
- embellishments

Assemble the box

Photo 1



- Fold and burnish all of the score lines on the card for the box
- Add pencil marks in the middle of the 2nd horizontal score line from the top (with the skinny panel at the right). The mid points are at 3/4", 2-1/4", 3-3/4" & 5-1/4" from the left (see photo 1)
- Fold the card along the 2nd horizontal line that you've just marked (see photo 2)
- Use your pencil marks to cut the diagonal lines and vertical score lines at the top in Photo 2. You'll be going through 2 layers of card for these lines.
- Cut all the other dashed lines you see in Photo 2 to create the tabs for the side and bottom
- Unfold the top section and your card should now look like Photo 3

Photo 2



- The top horizontal score line should be folded to the front as shown in Photo 4
- Now add the 4 larger pieces of designer series paper to the front 4 panels
- Then add the 4 smaller pieces of paper to the front of the folded over section, lining the edge of the paper to the bottom edge of the card
- Add glue to the side tab marked A and adhere to the back of the first panel
- Fold and glue the tabs to form the base of the box – make sure you fold the front one last for a neat finish
- Push the top section down to close the lid then add glue to the tab marked B and tuck it behind the first panel to join this section together
- Add your ribbon around the centre of the box
- Stamp your sentiment on the die cut provided
- Add the die cut frame and leaves with glue and then pop the sentiment piece up with dimensionals.
- Add embellishments as desired

Photo 3

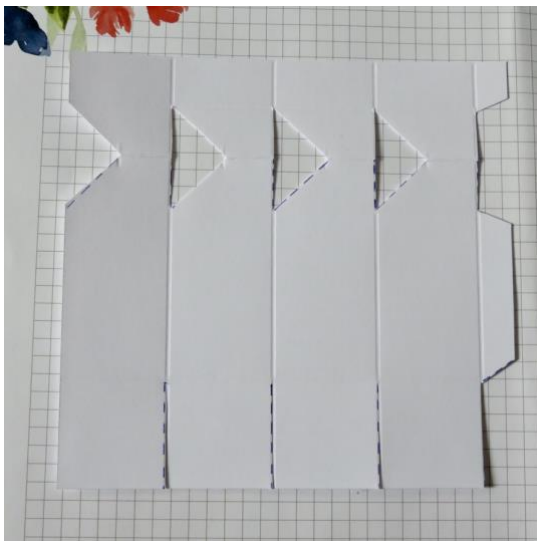


Photo 4

